

Year End

Expiration Date: DEC. 31, 2011

SALE!



561-863-2220 • 800-330-1800 561-863-2250 • 888-330-1888 order@expediter.com

part #28480
Round Adjustable
Gooseneck Coupler

Capacity - 20,000 lbs
Adj. Overall Height: 29½" - 40½"
¾" Set Screws
4½" OD x ¼" Wall Outer Tube
4" OD x ¼" Wall Inner Tube



Part #	Price (each)	Qty
➔ 28480	\$49.95	

part #80140
2" Forged Coupler

5,000 lbs Capacity
2" Ball
3" Square Mount
Forged
Painted
Class III



Part #	Price (each)	Qty
➔ 80140	\$25.99	

part #80162
2" A-Frame Forged Coupler

7,000 lbs Capacity
2" Ball
A-Frame
Low-Profile Latch
Painted Finish



Part #	Price (each)	Qty
➔ 80162	\$20.00	

part #80164
2-5/16" A-Frame Forged Coupler

12,500 lbs Capacity
2-5/16" Ball
A-Frame
Low-Profile Latch
Painted Finish



Part #	Price (each)	Qty
➔ 80164	\$22.50	

part #80402
Coupler Guide

Installs between the trailer ball and ball mount platform. Machined bushings allow Hitchzilla™ to swivel, guiding the coupler over trailer ball. Use with 1-7/8" & 2" trailer balls with ¾" or 1" shanks.

- Gray powdercoat finish over steel diamond plate



Part #	Price (each)	Qty
➔ 80402	\$10.00	

part #80573
Jack Foot

2¼" x 4½" Stamped
Fits most round tube jacks
Inner Tube
Zinc Plated



Part #	Price (each)	Qty
➔ 80573	\$1.25	

Company Name	<input type="text"/>	RO. #	<input type="text"/>
Shipping Address	<input type="text"/>		
City	<input type="text"/>	State	<input type="text"/>
		Zip	<input type="text"/>
Phone #	<input type="text"/>		
Credit Card #	<input type="text"/>	Expires	<input type="text"/>
V-Code	<input type="text"/>	Mailing Zip Code	<input type="text"/>

Note:

THE EXPEDITER
email: order@expediter.com
tel: 561-863-2220 • 800-330-1800
fax: 561-863-2250 • 888-330-1888
(1)



561-863-2220 • 800-330-1800



561-863-2250 • 888-330-1888



order@expediter.com

part #150052

1.2K Sidewind Jack (mfg#JP104S1399)

2-Hole Mount; Zinc; Sidewind
Capacity: 1,200 lbs
Height: 22" (retracted)
36"(extended)
Tube Size: 1-5/8" (inner)
1-7/8" (outer)
Travel: 14"



Limited
Quantities

Part #	Price (each)	Qty
➔ 150052	\$4.99	

part #30820

2K Sidewind Jack (mfg#620325)

No Mount; Zinc; Sidewind
Capacity: 2,000 lbs
Height: 16" (retracted)
26"(extended)
Tube Size: 1 3/4" (inner)
2" (outer)
Travel: 10"



Limited
Quantities

Part #	Price (each)	Qty
➔ 30820	\$4.99	

part #5411-25

Adapter

6 Round to 4 Flat Adapter - 25 pcs Bulk Pack



ONLY
\$0.60 EACH

Part #	Price (Bulk Pack)	Qty
➔ 5411-25	\$15.00	

part #5404

Socket

6 Way Round Socket
Die-Cast Housing



Part #	Price (each)	Qty
➔ 5404	\$1.25	

part #18017-004

Connector Sets (8 pcs total)

4-Pin Plug/Socket Set - 4 Pack



Part #	Price (4 Pack)	Qty
➔ 18017-004	\$2.50	

part #18043

"KNOCKOUT" Vehicle Socket

4-Pin "Knock-out" Socket; 30" Wires
Requires 1 1/4" hole, or mounting bracket
Fits #5440 bracket

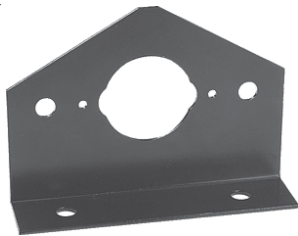


Part #	Price (each)	Qty
➔ 18043	\$0.45	

part #5440

Socket Mounting Bracket

4 & 6 way round socket mounting
bracket. Also fits #18043 "Knock-out"
connector



Part #	Price (each)	Qty
➔ 5440	\$0.45	

part #1319

Mounting Bracket

Cleat Mount Bracket - Plastic
Used to attach lights to boat cleats with
bungee cords



Limited
Quantities



Part #	Price (each)	Qty
➔ 1319	\$0.40	

part #2711

Submersible L.E.D Light Kit

L.E.D. SUBMERSIBLE trailer light kit. Kit
includes 2 stop and tail lights, 25' trailer
wire harness, 4' trunk connector, license
bracket, all mounting hardware. Voltage
8-14 VDC. Clamshell.



Part #	Price (each)	Qty
➔ 2711	\$25.00	

Note:

THE EXPEDITER

email: order@expediter.com
tel: 561-863-2220 • 800-330-1800
fax: 561-863-2250 • 888-330-1888

Company Name	<input type="text"/>	PO. #	<input type="text"/>
Shipping Address	<input type="text"/>		
City	<input type="text"/>	State	<input type="text"/>
		Zip	<input type="text"/>
Phone #	<input type="text"/>		
Credit Card #	<input type="text"/>	Expires	<input type="text"/>
V-Code	<input type="text"/>	Mailing Zip Code	<input type="text"/>



part #1334

HD Light Protector Box (Left with Tag Light Holes)
Tail Light Protector for trailers over 80" wide. Inside Dimensions: 5-1/8" H x 6-5/8" W x 3" D



Part #	Price (each)	Qty
➔ 1334	\$9.25	

part #1335

HD Light Protector Box (Right)
Tail Light Protector for trailers over 80" wide. Inside Dimensions: 5-1/8" H x 6-5/8" W x 3" D



Part #	Price (each)	Qty
➔ 1335	\$9.25	

part #2625-K

Marker Light Kit ~ (amber)
Sealed side marker clearance with chrome bracket & plug



Part #	Price (each)	Qty
➔ 2625-K	\$0.65	

part #2904 (LH - w/License Illuminator)
Tail Light (Submersible)

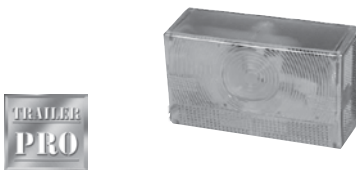
Acrylic lens and high impact housing are sonic welded for airtight "Belljar" submersible applications. 6" L x 3 1/2" H x 2 1/4" D. Approved for over 80" trailers.



Part #	Price (each)	Qty
➔ 2904	\$2.99	

part #2905 (RH - w/o License Illuminator)
Tail Light (Submersible)

Acrylic lens and high impact housing are sonic welded for airtight "Belljar" submersible applications. 6" L x 3 1/2" H x 2 1/4" D. Approved for over 80" trailers.



Part #	Price (each)	Qty
➔ 2905	\$2.99	

part #2664
Submersible Light Kit

Kit includes 2 stop and tail lights, 20' trailer wire harness, 4' trunk connector, license bracket, all mounting hardware.



Part #	Price (each)	Qty
➔ 2664	\$12.99	

part #27656A
L.E.D Guide On Light

Waterproof L.E.D. marker lights fit on top of 2" post guide-ons
8 ft. wire leads and connectors
Red rear facing, Amber front facing L.E.D.s



Part #	Price (each)	Qty
➔ 27656A	\$22.65	

part #57903
Adapt-Hitch-Ball Set

- 8,000 lbs gross load
- 1-7/8", 2" & 2-5/16" dia. balls
- 1" x 2 1/4" shank



Part #	Price (each)	Qty
➔ 57903	\$19.99	

part #6788
Receiver Tube Cover

Rubber tube cover for 2" sq. receivers



Part #	Price (each)	Qty
➔ 6788	\$0.99	

Company Name	<input type="text"/>	RO. #	<input type="text"/>
Shipping Address	<input type="text"/>		
City	<input type="text"/>	State	<input type="text"/>
		Zip	<input type="text"/>
Phone #	<input type="text"/>		
Credit Card #	<input type="text"/>	Expires	<input type="text"/>
V-Code	<input type="text"/>	Mailing Zip Code	<input type="text"/>

Note:

THE EXPEDITER

email: order@expediter.com
tel: 561-863-2220 • 800-330-1800
fax: 561-863-2250 • 888-330-1888



561-863-2220 • 800-330-1800



561-863-2250 • 888-330-1888



order@expediter.com

part #69240
Frame Hitch Drawbar Kit

Drawbar (3500# w/3/4" Ball Hole 7" Length x 5/8" Rise x 1 1/4" Drop), Black, Class II.



Part #	Price (each)	Qty
➔ 69240	\$4.99	

part #21287
Ball Mount (mfg#665450)

Capacity: 6,000 lbs
Hole Size: 1"
Length: 8"
Rise: 3/4"
Drop: 2"
Chrome



Part #	Price (each)	Qty
➔ 21287	\$5.99	

part #76530
Chrome Ball Mount

Hole Size: 1"
Length: 8"
Rise: 2"
Drop: 3 1/4"
5,000 GTW
Chrome
Class III



Part #	Price (each)	Qty
➔ 76530	\$9.99	

part #2570
Receiver Hitch Lock

1/2" x 3"
For Class I and Class II hitches with 1 1/4" square tubes



Part #	Price (each)	Qty
➔ 2570	\$1.65	

part #4544
Stainless Steel Hub

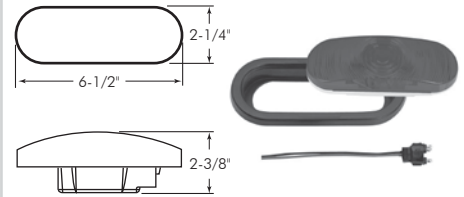
5 on 4 1/2" bolt circle. Fits 3500# axles. Includes #58856 grease seal, #68149 & 44649 bearings, #81733 grease cap, #34007 cotter pin, #4258 stainless steel lug nuts.



Part #	Price (each)	Qty
➔ 4544	\$75.00	

part #2648-K
6" Oval Tail Light Kit

Tail, Stop & Turn with Grommet and Plug



Part #	Price (each)	Qty
➔ 2648-K	\$2.99	

part #42484
Load Lock Aluminum Ratchet

Aluminum ratcheting cargo bar can be easily installed at any point inside trailer or truck body. Durable neoprene swivel feet provide excellent grip. Adjusts from 89" to 105".



Part #	Price (each)	Qty
➔ 42484	\$12.50	

part #A10-0908
Wheel Chock

Prevents tires from rolling and sliding. Has grooved surface for better grip, and nylon cord to easily remove the chock when finished.



Part #	Price (each)	Qty
➔ A10-0908	\$3.50	

part #V1211
Wheel Chock Display

Holds 42 #A10-0908 Wheel Chocks
FREE with purchase of 28 #A10-0908 Wheel Chocks



Part #	Price (each)	Qty
➔ V1211	FREE	

Note:

THE EXPEDITER

email: order@expediter.com
tel: 561-863-2220 • 800-330-1800
fax: 561-863-2250 • 888-330-1888

Company Name	<input type="text"/>	RO. #	<input type="text"/>
Shipping Address	<input type="text"/>		
City	<input type="text"/>	State	<input type="text"/>
		Zip	<input type="text"/>
Phone #	<input type="text"/>		
Credit Card #	<input type="text"/>	Expires	<input type="text"/>
V-Code	<input type="text"/>	Mailing Zip Code	<input type="text"/>



part #WC181212
Motorcycle Wheel Chock

- Universal Motorcycle Wheel Chock
- 18" long x 12" wide x 12¼" tall
- Tapered design accommodates various tire widths
- Bolt-down design for truck beds, trailers, or garage floors
- Solid carbon steel construction, 3/16" mounts and 5/8" formed rod
- Durable black powder coat finish
- (3) 3/8" x 2½" zinc plated carriage bolt fasteners included
- Includes all mounting hardware
- Retail box, full color



Part #	Price (each)	Qty
➔ WC181212	\$22.95	

part #2997
Smooth Aluminum Fender

9" (W); 31" (L); 15" (H)



Part #	Price (each)	Qty
➔ 2997	\$16.50	

part #7172
U-Bolt

- Zinc Plated
- Square Bend
- Size: 3/8" - 16 Thread
- ID: 2-1/8"
- Length: 5½"



Part #	Price (each)	Qty
➔ 7172	\$0.25	

part #1290-150
Black Bunk Carpet

Deluxe, high quality, weather-resistant carpet renews trailebunk appearance and protects boat from scratches durable backing with minimal water retention.

- 11" wide
- 150' long



Part #	Price (each)	Qty
➔ 1290-150	\$122.40	

part #11211
Coupler Lock

Fits most 1-7/8" stamped couplers



Part #	Price (each)	Qty
➔ 11211	\$2.99	

part #30740
Trailer Dolly, 600 lbs Tongue Weight, Pneumatic Tires

10½" x 3-3/8" pneumatic tires cushion the load and provide smooth maneuverability. 1-7/8" chrome hitch ball has a ¾" dia. shank. Supports up to 600 lbs for easy maneuverability of utility, boat, cargo, jet-ski and other small trailers. Ship Wt. 29 lbs.



Part #	Price (each)	Qty
➔ 30740	\$43.50	

part #52014
Cargo Carrier

20" x 60", 500 lbs capacity, fits 2" hitch, folds in half for compact storage when not in use.



Part #	Price (each)	Qty
➔ 52014	\$49.99	

part #BT08
Brake Tool Kit

1 pc brake spring removal tool (Fits 5/8" dia. spring); 1 pc brake spring removal tool (Fits many import vehicles); 1 pc brake spring removal tool (Fits ¾" & 13/16" dia. springs); 1 pc brake return spring removal tool; 1 pc mini brake adjusting spoon; 1 pc brake spring pliers; 2 pcs brake adjusting spoon



Part #	Price (each)	Qty
➔ BT08	\$15.99	

part #BA1
Brass Battery Bolt Adapter

Designed for side bolt batteries. It is used to attach a second electrical cable to side bolt batteries in order to power electric & electro-hydraulic units installed on trucks.

- 3/8"-16 thread



Part #	Price (each)	Qty
➔ BA1	\$0.99	

Company Name	<input type="text"/>	RO. #	<input type="text"/>
Shipping Address	<input type="text"/>		
City	<input type="text"/>	State	<input type="text"/>
		Zip	<input type="text"/>
Phone #	<input type="text"/>		
Credit Card #	<input type="text"/>	Expires	<input type="text"/>
V-Code	<input type="text"/>	Mailing Zip Code	<input type="text"/>

Note:

THE EXPEDITER

email: order@expediter.com
tel: 561-863-2220 • 800-330-1800
fax: 561-863-2250 • 888-330-1888