



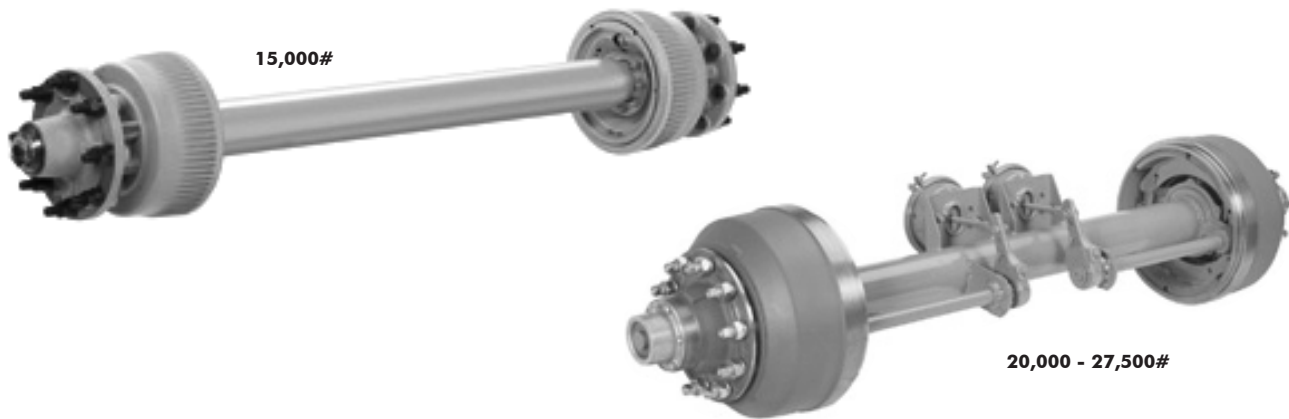
15,000# Dexter Sprung Axles Assembly

Made to Order

Overhang = (Hub Face - Spring Center)

Features and Options	
Tubing	5" OD - .44 Wall
Bearings	#3984 Inner & #28682 Outer
Hub	8 Lug on 275mm
Brake	12-1/4" x 5" Electric 12-1/4" x 5" Hydraulic 12-1/4" x 5" Air <i>*duo servo, ABS also available on hydraulic brake</i>
Suspension	Slipper Spring - 3" Wide Hanger Kit Hutch 9700 Series Kit
Lubrication	Oil Bath (standard) or Grease (optional)

Axle Type	Min.	Max.
Straight (dual wheel)	29.00"	33.00"



20,000 - 27,500# Dexter Sprung Axles Assembly

Made to Order

Features and Options	
Tubing	5" OD - .50, .625, or .75 Wall Air ride requires .625 minimum wall thickness
Bearings	#HM218248 Inner & #HM212049 Outer
Hub	3 or 5 Spoke Cast 10 Lug on 8.75" 10 Lug on 11.25" <i>*inboard and outboard drums available</i> Hub Piloted Optional
Brake	12-1/4" x 7-1/2" Electric 16-1/2" x 7" Hydraulic
Suspension	Hutch 9700 Series Air Ride
Lubrication	Oil Bath (standard) or Grease (optional)

Note
Maximum: Track minus 32.5" or as tire clearance allows
Minimum: Track minus 34.5"

These axles available on request

Information

Hubs and Axles

Brake Assemblies

Suspensions & Fasteners

Tires & Wheels

Couplers, Jacks & Winches

Hitches & Towing Accessories

Body Components

Boat Trailer Parts

Lights & Electrical

Locks & Cargo Control

Brake Actuating Systems

Switches