

Information

Hubs and Axles

Brake Assemblies

Suspensions & Fasteners

Tires & Wheels

Couplers, Jacks & Winches

Hitches & Towing Accessories

Body Components

Boat Trailer Parts

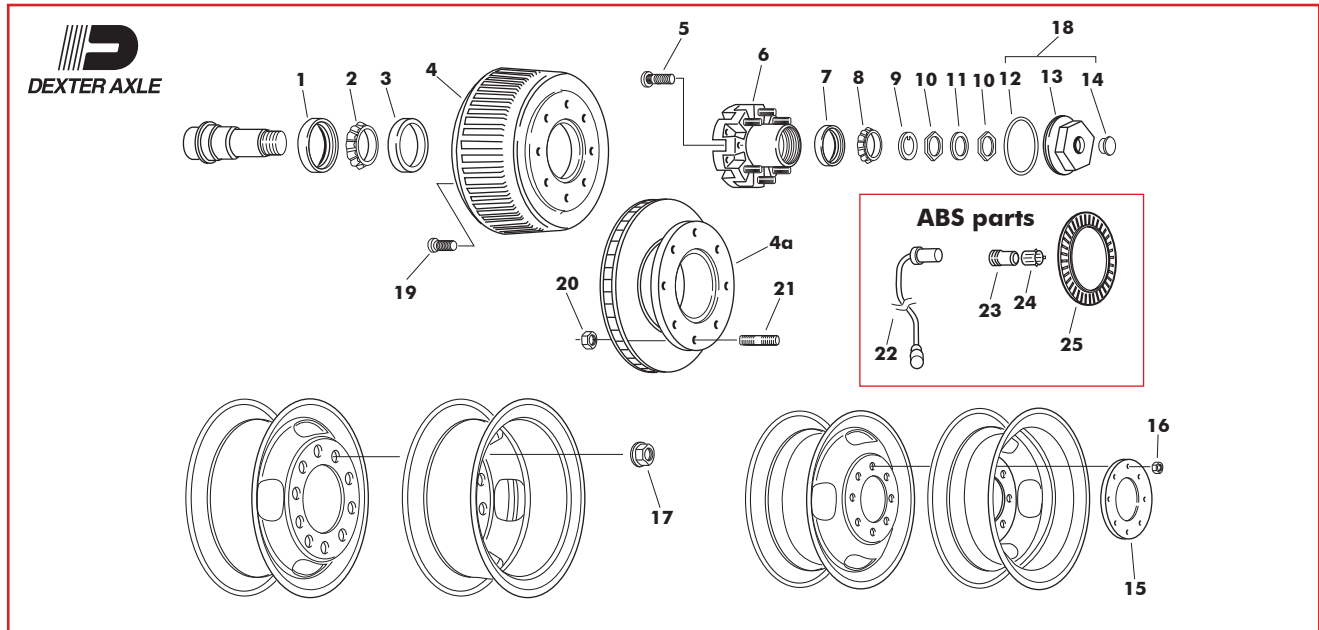
Lights & Electrical

Locks & Cargo Control

Brake Actuating Systems

Switches

Hubs & Drums for "Dexter" 9K and Larger Axles



Item #	Description	9 & 10K General Duty	10K HD 8 on 6.50	10K HD Disc 8 on 6.50	12K Hi-Profile 8 on 6.50	12K Disc 8 on 6.50	15K 8 on 275mm
1	Unitized Oil Seal	91051	91023	91023	91023	91023	91023
2	Inner Bearing Cone	387A	395S	395S	3984	3984	3984
3	Inner Bearing Cup	382A	394A	394A	3920	3920	3920
4	Brake Drum	109044-01	109027-01	-	109028-01	-	109028-01
4	Brake Drum-ABS	109044-03	109027-03	-	109028-05	-	109028-05
4a	Brake Rotor	-	-	107006-01	-	107006-01	-
4a	Brake Rotor-ABS	-	-	107006-02	-	107006-02	-
5	Wheel Mtg. Stud	107115	107115	107115	107115	107115	107194 (Std) 107195 (Long)
6	Hub w/Cups & Stud	108288-03	108214-05	108214-06	108214-08	108214-10	108401-05 (Std) 108401-06 (Long)
7	Outer Bearing Cup	25520	382A	382A	28622	28622	28622
8	Outer Bearing Cone	25580	387A	387A	28682	28682	28682
9	Spindle Washer	105070	105060	105060	105060	105060	105060
10	Spindle Nut	106096	106084	106084	106084	106084	106084
11	Tang Washer	105071	105059	105059	105059	105059	105059
12	Oil Cap "O" Ring	110050	110050	110050	110050	110050	110050
13	Oil Cap	121036	121036	121036	121036	121036	121036
14	Oil Cap Plug	146032	146032	146032	146032	146032	146032
15	Wheel Clamp Ring	133052-01	133052-01	133052-01	133052-01	133052-01	-
16	Cone Wheel Nut	4228	4228	4228	4228	4228	-
17	Swivel Flange Nut	-	-	-	-	-	106118
18	Oil Cap Assembly	81993	81993	81993	81993	81993	81993
19	Drum Mounting Screw	107245	107244	-	107244	-	107244
20	Rotor Mounting Nut	-	-	106046	-	106046	-
21	Rotor Mounting Stud	-	-	125014	-	125014	-
22	ABS Sensor, Straight	197004	197004	-	197004	-	197004
23	ABS Sensor Block	124204	124204	-	124204	-	124204
24	ABS Sensor Clip	197002	197002	-	197002	-	197002
25	ABS Tone Ring	124203	124203	124203	124203	-	124203

Hubs, drums or hub & drums sold as hub, cups and studs only bearing numbers shown for reference, these units sold generally for oil bath.