

ALL PURPOSE UTILITY CARRIER

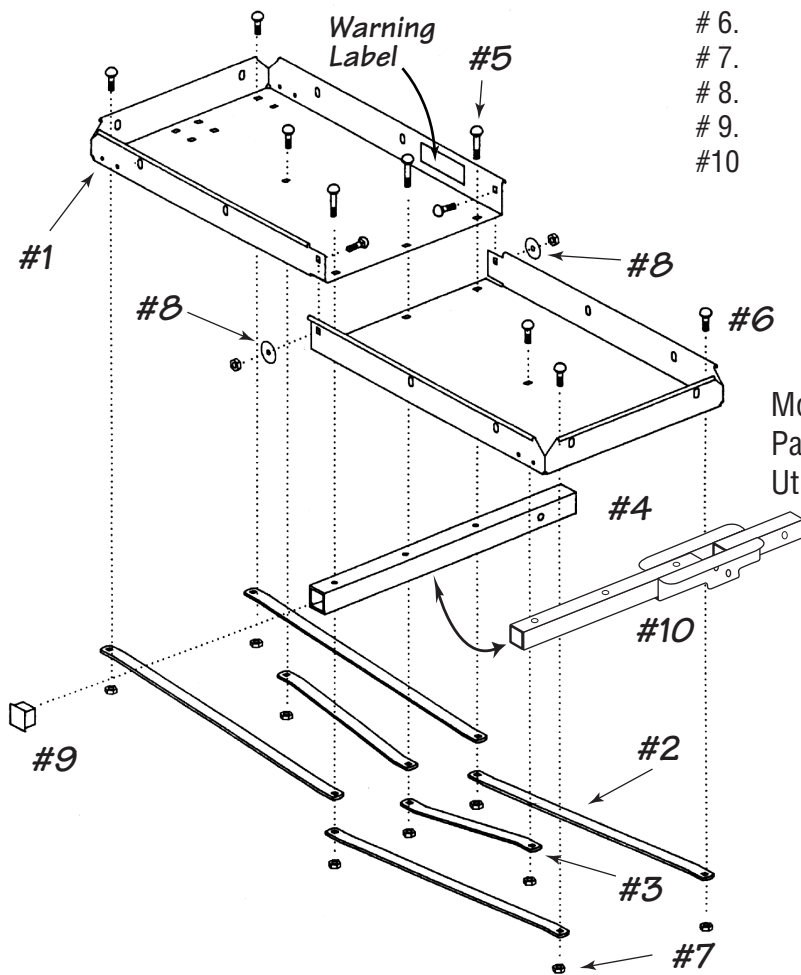
Part # 86112 - Straight Mounting Tube
Part # 86168 - Folding Mounting Tube

Please inspect the contents of this package and then follow the step by step installation instructions.

Be sure to read the operation instruction and warnings before using your Utility Carrier.

This kit contains the following components:

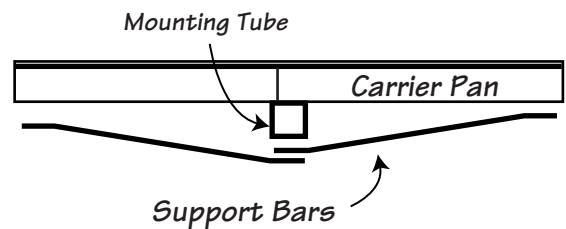
# 1.	Carrier Pan	2 pcs.
# 2.	Long Support Bar 1.25" x 31.344"	4 pcs.
# 3.	Short Support Bar 1.25" x 17.438"	2 pcs.
# 4.	Mounting Tube	1 pc.
# 5.	3/8" x 3 1/4" Carriage Bolt	3 pcs.
# 6.	3/8" x 3/4" Carriage Bolt	8 pcs.
# 7.	3/8" Hex Nyloc Nut	11 pcs.
# 8.	3/8" Flat Washer	2 pcs.
# 9.	End Cap	1 pc.
#10	Mounting Tube Fold Up Model	1 pc.



NOTE: Locking pin for securing mounting tube to vehicles' receiver is not included.

Mounting tube for
 Part # 86168 "Fold Up"
 Utility Carrier

Rear View:



NOTE: The Support bars are bent on each end. Be sure to turn the bars so they mount flush to the pan and tube

Step 1. Insert two Carrier Pans into each other as shown in Figure 1. Be sure to have the warning label towards the front of the vehicle as shown, so that it is always clearly visible to person loading the Cargo Carrier.

Step 2. Insert the two horizontal 3/8" x 3/4" Carriage Bolts at the points where the two Carrier Pans meet. Place Flat Washers and turn Nuts on. Tighten Nuts enough to hold Pans together.

Step 3. Place Carrier Pan assembly on it's side and assemble Support Bars as shown. Torque all Nuts 15 ft./lbs. Insert End Cap on back side of Mounting Tube.

Instructions #15315

TIE DOWN ENGINEERING • 5901 Wheaton Drive • Atlanta GA, 30336
www.tiedown.com • (800) 241-1806 • FAX (404) 349-0401



050704,155