

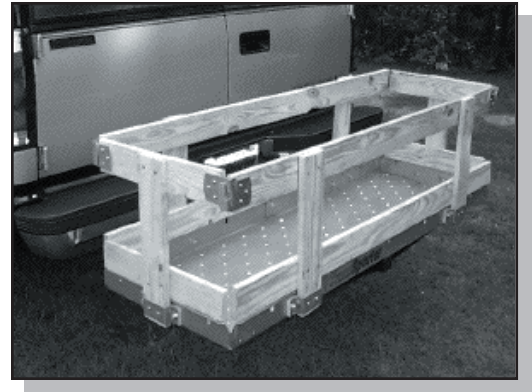


Stake Side Kit

(Gate frame Hardware Kit)

Assembly Instructions

P/N 70039



Thank you for purchasing the Stake Side Hardware Kit for your *TranzSporter Utility Carrier*. Please review the following instructions before starting the assembly. The stake side kit will bring new uses for your Utility Carrier and with proper care, will give you years of service.

The Stake Side Frame Hardware Kit is designed to fit the *TranzSporter* line of *Utility Carriers*, Models 86112 (20" x 60"), and the "MINI" Models (20" x 34") - 86139, 86141 and the 86171. All hardware is included, 1x4 lumber required to complete the stake side kit is listed below and must be purchased. Use only top grade 1x4 wood that is free of knots and cracks.

Note: *TranzSporter Utility Carriers* manufactured prior to 9/95, do not have pre-drilled holes for the stake pockets. Use a stake pocket as a template to mark the pan and drill 3/8" holes for mounting. The spacing is 9-1/2" from each corner for the first 3/8" hole on the "long" sides and 7-1/2" from each corner on the "short" sides. Hole center is 1-3/8" from bottom of pan.

Parts List

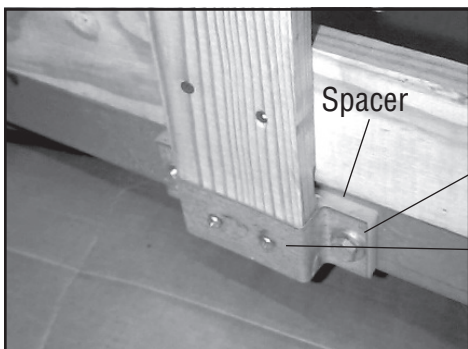
Description	Qty
Post Pocket	6
Spacer	6
Right Corner Bracket	4
Left Corner Bracket	4
3/8" x 1" Hex Head Bolt	12
3/8" Hex Nyloc Nut	12
3/8" Flat Washer	12
# 10, 3/4" Panhead Screw	36
# 8, 1-1/4" Wood Screw	28

Lumber List

Description	20" x 60"	20" x 34"
1x4x18.5"	4	4
1x4x58.5"	4	
1x4x32.5"		4
1x4x24"	6	6

Tool List

- Saw (hand or circular with wood blade)
- Phillips head screw driver, Tape measure
- Open end wrench 9/16", Socket 9/16
- "T" square (or box with square corner)

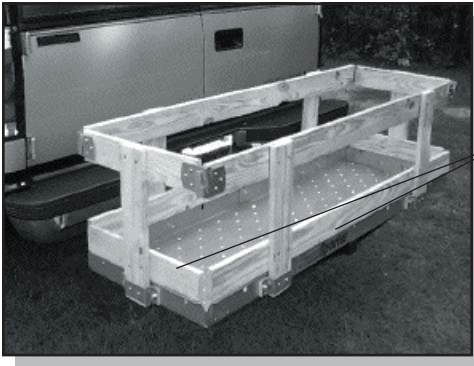


1. Pre-cut your 1x4 lumber as shown in the chart, for your particular Utility Carrier.

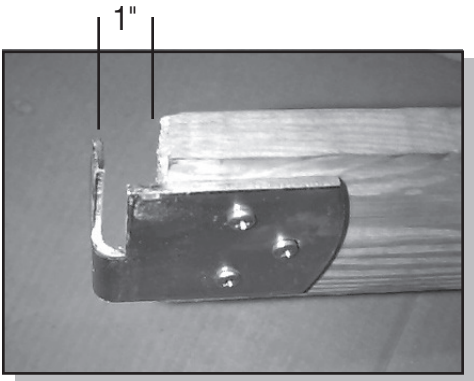
2. Attach the 6 pocket posts and 6 spacers as shown in the picture using 2 - 3/8"x1" bolts, 2 - 3/8" flat washers and 2 nyloc nuts.

3. Place a 24" 1x4 in each of the pockets, using two 3/4" panhead screws in each to attach lumber to the carrier. The bottom of the 1x4's should be even with the bottom of the pocket. It will help to have the 1x4's "square" with the Utility Carrier Pan. Use a "T" square or use a cardboard box to align the boards. Place box on carrier lip next to 1x4, using 90° angle of box to align post "square" with carrier.

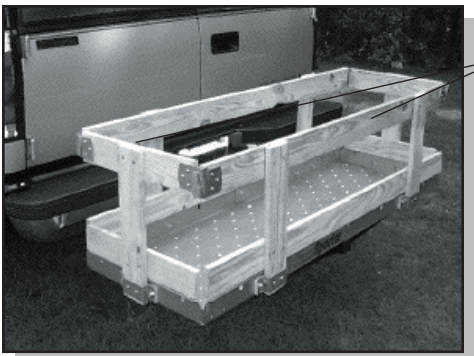
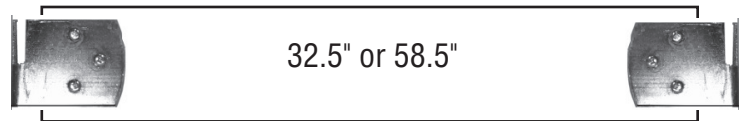
Part No. 15335
070804,A715



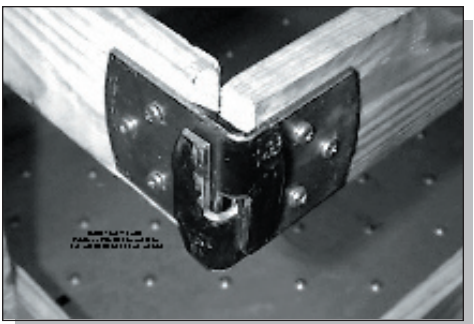
4. Attach the "bottom layer" 1x4's to the upright 24" posts previously installed. Boards should be centered so that there is equal spacing on each end. Use two #8 1-1/4" wood screws at each post.



5. Using 3/4" panhead screws, attach corner brackets to the 1x4 stake sides as shown. Center the brackets on the 1x4 extending the bracket out so that there is a 1" gap between the end of the 1x4 and the inside edge of the corner bracket. You will have two long sections (32.5" or 58.5") and two 18.5" sections with corner brackets attached. Diagram below shows proper left and right corner bracket mounting.



6. Attach the "top layer" 1x4's to the upright 24" posts previously installed. boards should be centered so that there is equal spacing on each end. Boards should be even with top of posts. Use two #8 1-1/4" wood screws at each post. Attach the "long" 1x4's first.



7. The end boards are then attached so that the corners lock together as shown, and attached to the end post with three #8 1-1/4" wood screws.

Helpful Hints

- Use treated lumber or coat lumber with a weather resistant paint if the carrier will be used in wet weather.
- Always attach the posts to the Utility Carrier with the wood screws to keep the stake side assembly from coming off when in use.

Part No. 15335
070804,A715

TIE DOWN ENGINEERING • 5901 Wheaton Drive • Atlanta GA, 30336
www.tiedown.com • (404) 344-0000 • Fax (404) 349-0401

